

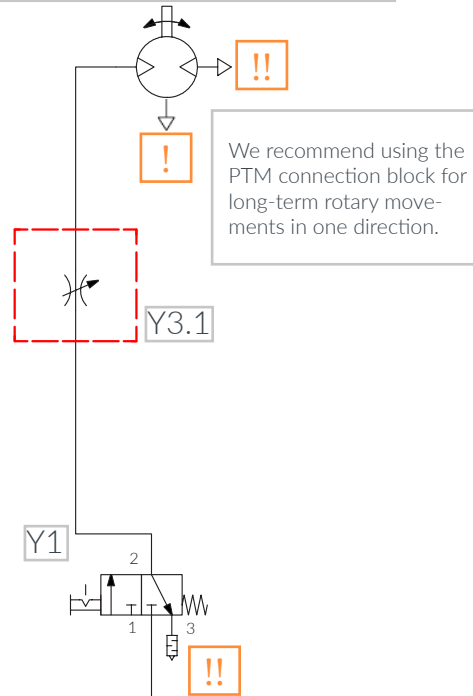
Circuit diagram compressed air motors

No.	Labelling	Description
1	P	Compressed air source
2	Z	Maintenance unit
3	Y1	3/2-way valve with selector switch, rest position locked
4	Y2.1	5/3-way valve with selection lever, rest position locked
5	Y2.2	5/3-way valve with selection lever, rest position locked
6	Y3.1	Throttle valve
7	Y3.2	Throttle valve
8	Y3.3	Throttle valve
9	Y3.4	Throttle valve

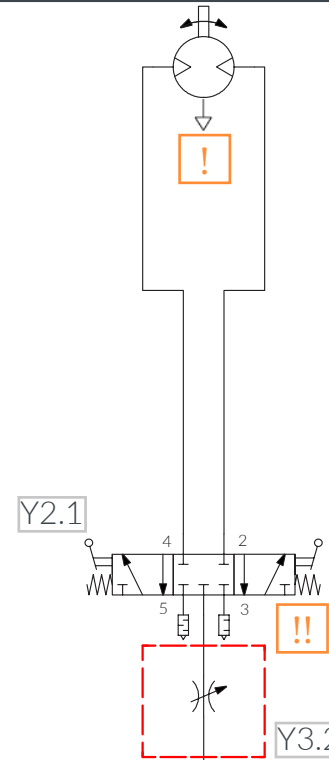
! Case ventilation must be able to escape freely and without resistance. For motors that are operated in humid environments or under water, the exhaust air must be routed out of the humid area via a hose so that no water can penetrate the housing.

!! The exhaust air must be able to escape freely and without resistance. A silencer that is too small can lead to dynamic pressure in the housing.

Motor version 1:
 one rotation direction,
 switching on/off via 3/2-way valve,
 speed adjustable via throttle Y3.1



Motor version 2:
 Clockwise/counterclockwise rotation/OFF
 via 5/3-way valve,
 speed adjustable via throttle Y3.2



Motor version 3:
 Clockwise/counterclockwise rotation/OFF
 via 5/3-way valve,
 speed individually adjustable for left-right
 rotation via throttle Y3.3/3.4

